

Smart view Solutions

COMPANY PROFILE



THE WALL

“We are in the middle of a modern revolution – a new age of human exploration that is perhaps rivaled only by its discovery of fire or electricity. The world economy is strong and promises to remain so at least for the foreseeable future! In the coming years, advances in AI, ML & IoT systems will likely revolutionize business models in many industries, and the energy generated by that should have a positive impact on the world economy. SmartView will continue to create sustainable corporate value by simultaneously generating economic and social esteem”

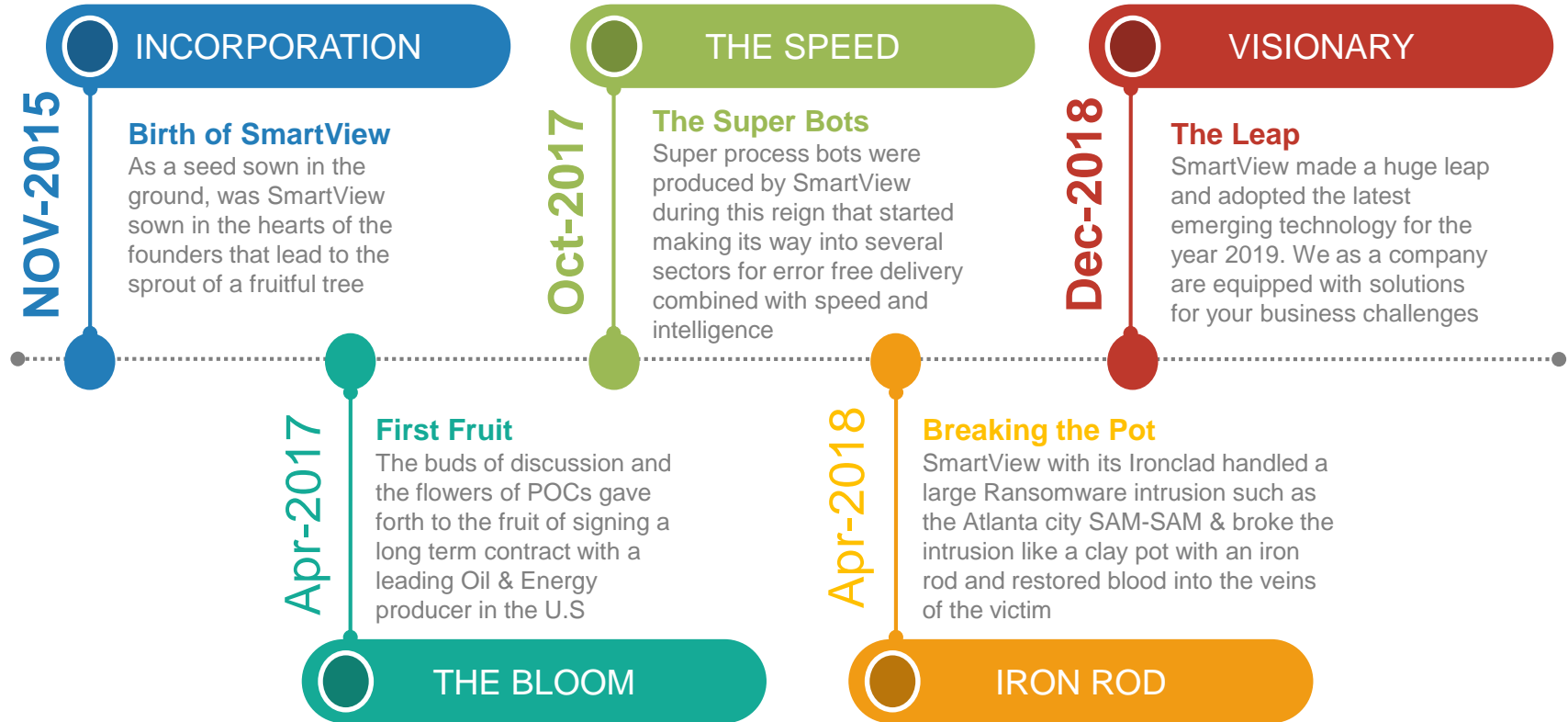
ABOUT SMARTVIEW

We provides business solutions leveraging innovative technologies for worldwide enterprises and small to medium size companies. We have a deep understanding of technology and a vast array of resources to fulfill today's business transformation. Today's businesses are changing rapidly, and we are committed to our clients to innovate and adapt with their dynamic corporate landscape.

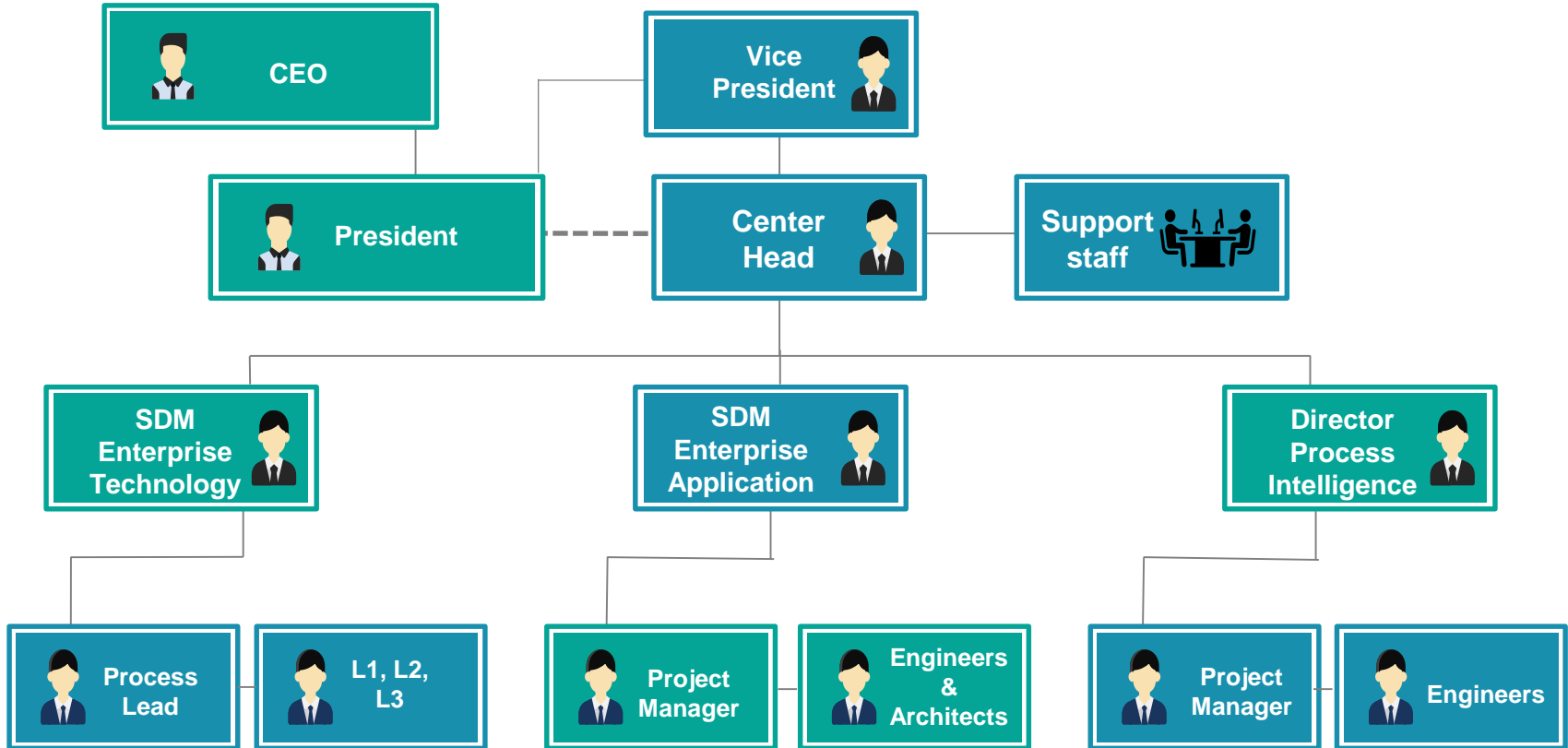
Because of our size, we are more nimble than our competitors, and have the ability to create innovative solutions and services tailored to our clients need which will provide the unique partnership that we believe no one else can offer.

Founded by IT management partners that have over 30 years of experience in IT services, business solutions, and business processes.

The Smart Age



The SMART Bond



A high-angle, over-the-shoulder photograph of a person with light-colored hair, wearing a blue long-sleeved shirt, sitting at a wooden desk. The person's hands are on the keyboard of a silver laptop. To the left of the laptop is a white coffee cup on a saucer and a clear glass of water. To the right is a small green basil plant in a white pot. In the foreground, a black tablet with a blue tab is lying flat, and a black marker is next to it. The background is a blurred wooden wall.

WHAT WE DO

To provide true service you must add something which cannot be brought or measured with money, and that is sincerity and integrity.

CORE COMPETENCY

OUR DNA

- ✓ IDEATE
- ✓ INNOVATE
- ✓ INTEGRATE



Robotic Process Automation

We help organizations incorporate RPA with exponential technologies like machine learning, artificial intelligence, natural language processing and knowledge based systems to drive enterprise-wide revolution.



Cloud & ERP

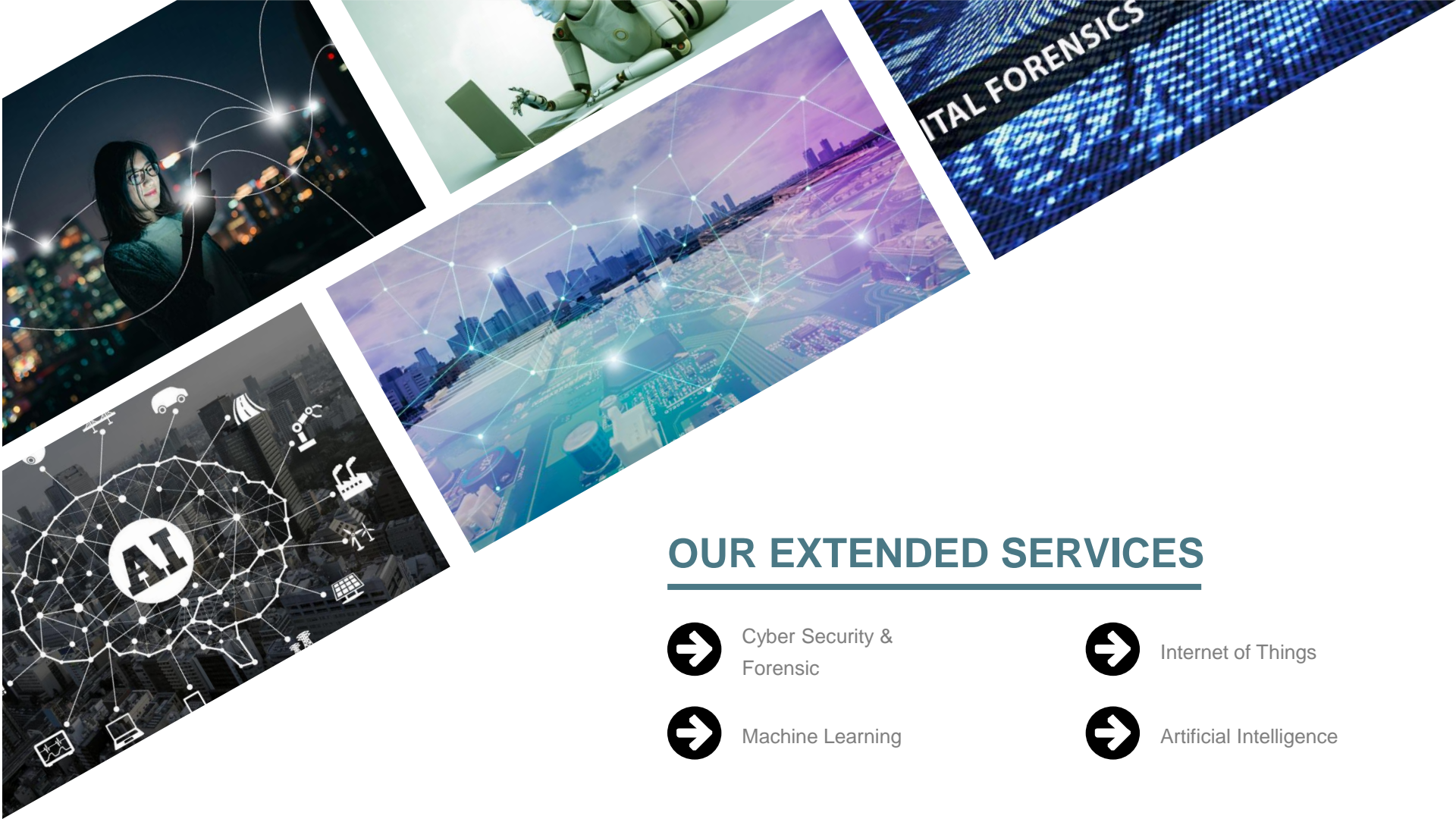
Innovate More. Maintain Less.

Turn to the cloud to scale and optimize IT resources, fuel agility, and accelerate growth. We employ technologies such as hybrid cloud, microservices, opensource & API to achieve digital transformation.



Managed IT Services

Our Managed IT Services program provides a cost effective, flexible and scalable framework to support your company's IT requirements.



OUR EXTENDED SERVICES



Cyber Security &
Forensic



Internet of Things



Machine Learning



Artificial Intelligence



We solve our clients' toughest challenges by providing unmatched services in strategy, consulting, digital, technology and operations

ON GOING PROJECTS



*HYBRID
DATACENTER*



*PROCESS
AUTOMATION*



DIGITAL FORENSIC

Our Awesome Numbers

90



PROJECTS

10



CLIENTS

90



HEAD COUNT

2017



18M

OUR PHILOSOPHY



Quality And Reliability

"We believe that doing the right things in the right way is the only way to do business. We value and empower our employees while striving to set a new standard for customer satisfaction"



OUR CORE VALUES



Simplicity



Integrity



Quality



Trust

OUR ROOTS ARE

EMBEDDED IN

INTEGRITY

- We do the right things, in the right ways and for the right reasons.

QUALITY

- We believe that good planning leads to good results.

TRUST

- Trust is our most valuable asset and essential to good relationships and strong business partnerships.

A Will to Win | Service Matters | Evolution Redefined



3 THREE STORIES



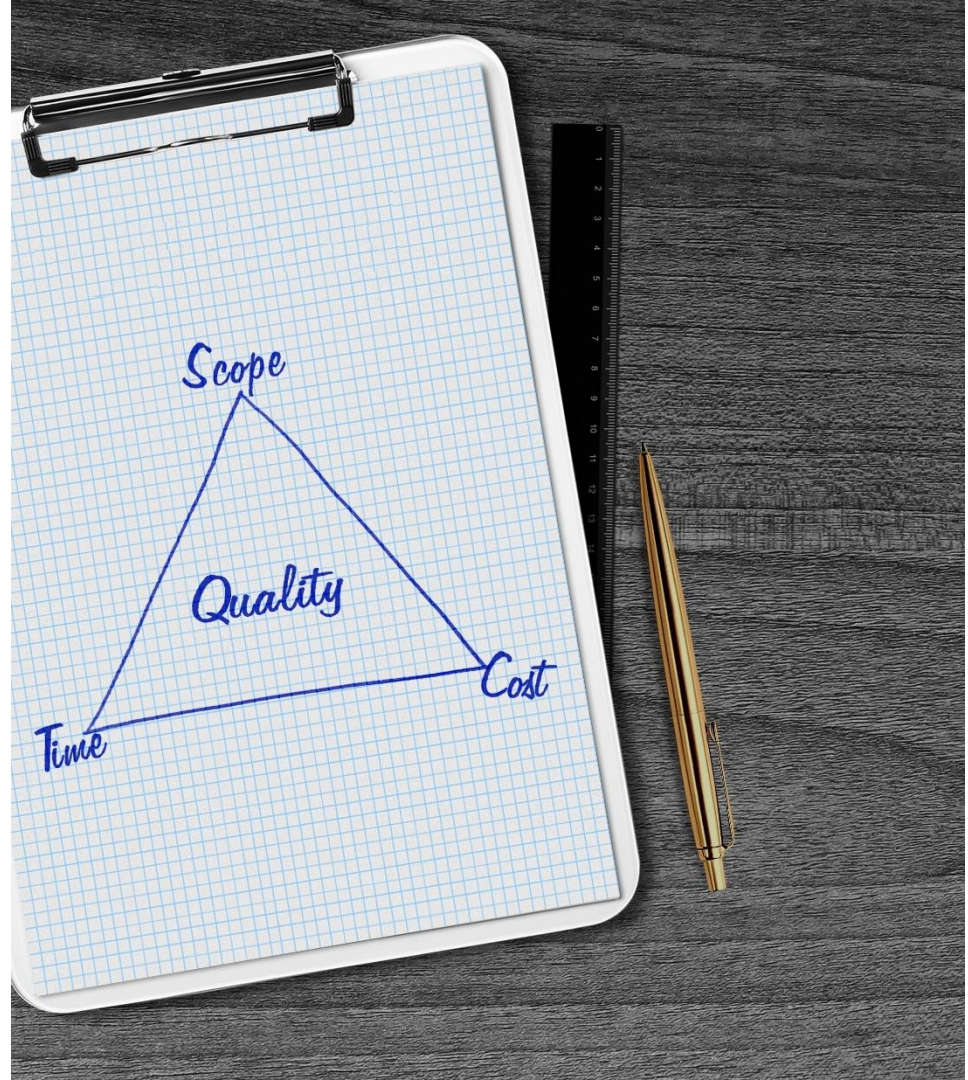
We were called on an emergency to support a bleeding business attacked by Ransomware. 180+ servers & 700+ work stations were restored in 7 days. The business couldn't thank us enough and partnered with us.



With several changes within the technology, the customer ignored hardening the environment and let to a serious vulnerability. We designed and implemented a secure environment and hardened all IT systems.



Due to company take over, the business had to plan, build and migrate to a new Datacentre within 6 months. SmartView helped the customer to plan, design, procure, build, migrate in less than 150 days.





4

FOUR WINGS



Our Customers Are Our Biggest Asset

We value our customers and do everything possible to exceed expectation.



Attention to Detail

We spend time devising, developing, optimizing and testing ourselves each new solution we implement.



Response to Request

We want you to be completely satisfied with our services. We will do whatever it takes to respond and have a short turn around time.



We LOVE Documentation

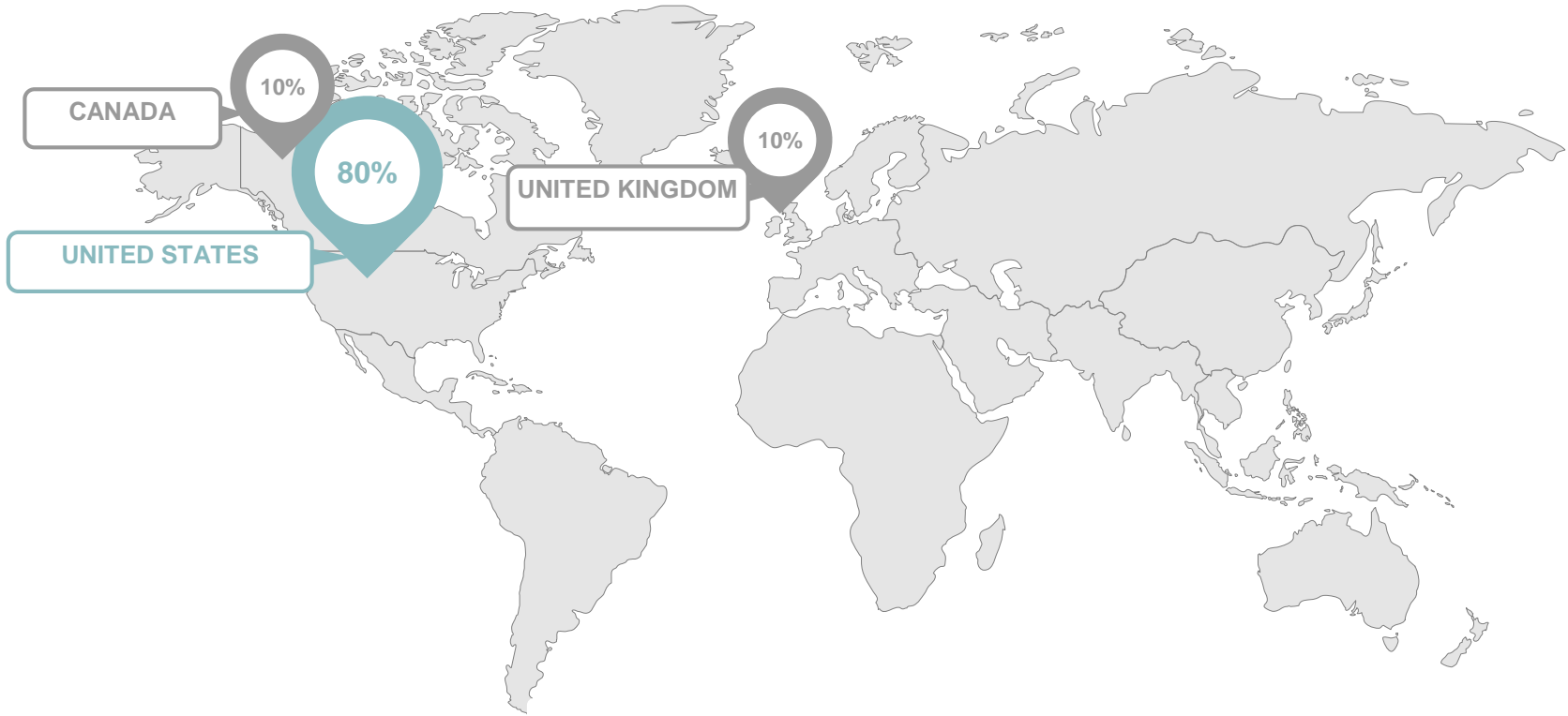
Proper documentation is critical for fast resolution and to get projects done right the first time. It's not even a question for us, all requests are documented.

WE HELP YOU

TURN YOUR IDEAS

INTO REALITY

Our footprints





OUR CUSTOMERS



**ISLAND
ENERGY**

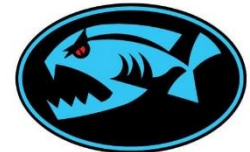


Par Pacific



WASH[®]

Seadrill 



seanic

SmartViews PATRONS'



GDT



DISTRIBUTION
NOW



 **Hydrasat**

SmartViews PATRONS'



Universal SmartView
Enterprises LLC

CONTACT US



📍 10777 Westheimer Rd. Suite 108,
Houston, Texas

📞 832-509-4597

@ info@smartview-solutions.biz

🌐 www.smartview-solutions.biz